

301 East Atlantic Boulevard  
Pompano Beach, FL 33060

PH: (954) 788-3400

Florida Certificate of  
Authorization # - 7928

BID / CONTRACT NO. :

## REVISIONS

[illegible]

SABBIA BEACH -  
PARCEL B

NE 7<sup>th</sup> COURT AND SR A-1-A  
POMPANO BEACH, FL 33062

SCALE: AS NOTED

DATE ISSUED: NOVEMBER 2020

DRAWN BY: JR Nov 3 2003

DESIGNED BY: JR,MP

CHECKED BY: MP

Michael J Phillips

MICHAEL J. PHILLIPS, RLA  
FLORIDA REG. NO. LA0001540  
(FOR THE FIRM)

SHEET TITLE

# CONCEPT LANDSCAPE PLAN

SHEET NUMBER

**DRC**  
PROJECT NO. 11898.00  
**PZ20-13000007**  
**1/20/21**

## PLANT LIST

<b>TREES</b>	
<b>PLANT NAME</b>	<b>SIZE / REMARKS</b>
<b>BUFFER TREES</b> MAY INCLUDE: LIVE OAK, MAHOGANY, GREEN BUTTONTWOOD, GUMBO LIMBO	16' HT; 8" SPRD; 4" DBH; FULL CANOPY
<b>BUFFER TREES</b> (FPL COMPATIBLE) MAY INCLUDE: SIMPSON STOPPER, CRAPE MYRTLE, SILVER BUTTONTWOOD, LIGUSTRUM	12' HT; 6' SPRD; 2" DBH; FULL CANOPY
<b>STREET TREES</b> MAY INCLUDE: LIVE OAK, GREEN BUTTONTWOOD, WILD TAMARIND, GUMBO LIMBO	16' HT; 8" SPRD; 4" DBH; FULL CANOPY
<b>STREET TREES</b> (FPL COMPATIBLE) MAY INCLUDE: SILVER BUTTONTWOOD, SIMPSON STOPPER, CRAPE MYRTLE,	12' HT; 6' SPRD; 2" DBH; FULL CANOPY
<b>PLANT NAME</b>	<b>SIZE / REMARKS</b>
<b>SPECIMEN PALMS</b> MAY INCLUDE: MEDJOL DATE PALM, SYLVESTER DATE PALM, ROYAL PALM	18' CT; 26" OA HT; HEAVY, MATCHED
<b>TALL PALMS:</b> MAY INCLUDE: COCONUT PALM, MONTGOMERY PALM, ALEXANDER PALM	14' CT; 22' OA HT; HEAVY
<b>SABAL PALMS</b>	12', 20', 28' CT; SLICK; STAGGERED
<b>ACCENT PALMS</b> MAY INCLUDE: ADONIDIA PALM, THATCH PALM, PAUROTIS PALM	7' & 11' CT; 10' & 15' OA HTS; FULL

## SHRUBS & GROUNDCOVERS

PLANT NAME	SIZE / REMARKS
BUFFER HEDGE MAY INCLUDE, BUT NOT LIMITED TO: SMALL-LEAF CLUSIA, RED-TIP COCOPLUM, BUT TITWOOD, FLORIDA PRIVET, WILD COFFEE	30" MIN. HT
FOUNDATION PLANTING MAY INCLUDE, BUT NOT LIMITED TO: GREEN ISLAND FICUS, WAX JASMINE, PHILODENDRON, PLUMBAGO, DWARF FIREBUSH, GREEN ARBORICOLA, JUNIPER, GOLDEN CREEPER	VARIABLES
ACCENT SHRUBS MAY INCLUDE, BUT NOT LIMITED TO: BROMELIADS, COONTIE, GROTON, CRINUM, GINGER, PHILODENDRON	VARIABLES

## NOTES

GOOD TO BE ST. AUGUSTINE 'FLORATAM', EXCEPT IN RETENTION AREAS.  
CONTRACTOR TO DETERMINE QUANTITY.

ALL PLANTS TO BE FLORIDA NO. 1 OR BETTER PER FLORIDA GRADES AND STANDARDS FOR NURSERY PLANTS.

ALL TREES TO BE BALLED & BURLAPPED UNLESS SPECIFIED OTHERWISE.

ALL SOD AND LANDSCAPE TO RECEIVE 100% COVERAGE WITH 100%  
OVERLAP FROM AN AUTOMATIC IRRIGATION SYSTEM USING AN APPROVED  
WATER SOURCE.

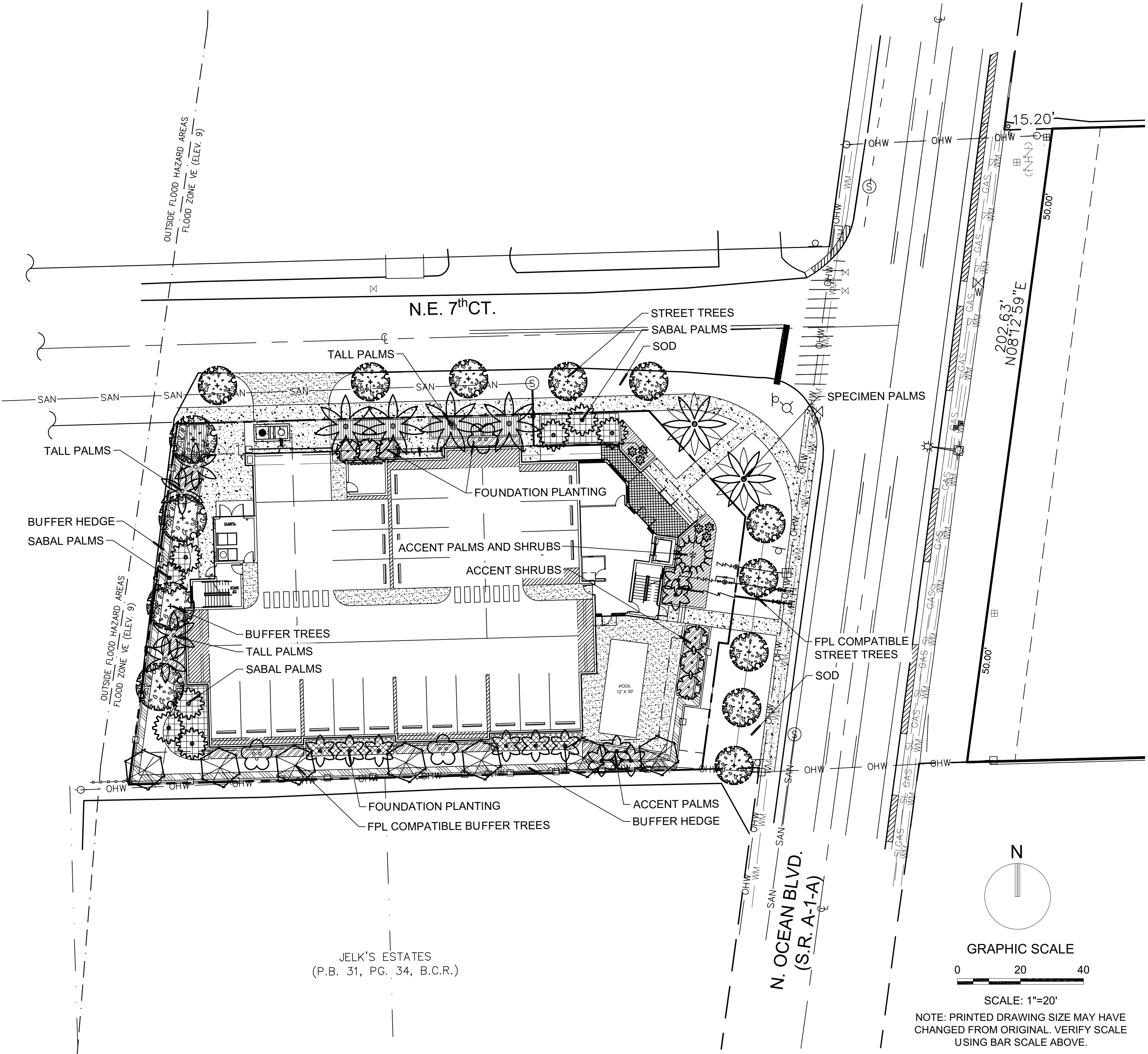
SUBBLERS TO BE PROVIDED FOR NEW AND RELOCATED TREES AND PALMS.

CONTRACTOR IS RESPONSIBLE FOR ALL CONDITIONS AND LANDSCAPE SPECIFICATION ATTACHED TO THIS PLAN AND PLANT LIST. PLAN AND SPECIFICATIONS SHALL BE CONSIDERED CONTRACT DOCUMENTS.

PRE-CONSTRUCTION MEETING IS REQUIRED BEFORE ANY PLANT MATERIAL IS INSTALLED ON SITE.

ALL ROAD ROCK, CONCRETE, ASPHALT AND OTHER NON-NATURAL MATERIAL BE REMOVED AND BE REPLACED WITH PLANTING SOIL PRIOR TO LANDSCAPE INSTALLATION.

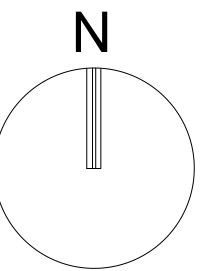
NO TRENCHING ALLOWED WITHIN ROOT ZONES OF EXISTING TREES.



JELK'S ESTATES  
(P.B. 31, PG. 34, B.C.R.)

GRAPHIC SCALE

0                      20                      40



## APHIC SCALE

20 40

NOTE: PRINTED DRAWING SIZE MAY HAVE  
CHANGED FROM ORIGINAL. VERIFY SCALE  
USING BAR SCALE ABOVE.